

THE EQUITY COUNTS DATA CENTER AND PARTNERSHIP INITIATIVE

**Building data capacity with
community-based organizations in Delaware.**



Presented by: Emily Kauffman



Background

Equity Counts Data Center

Collaboratively designed with goal to help communities, organizations, researchers, and policymakers understand and promote racial equity and social justice.



DELAWARE HEALTH AND SOCIAL SERVICES
Division of Public Health



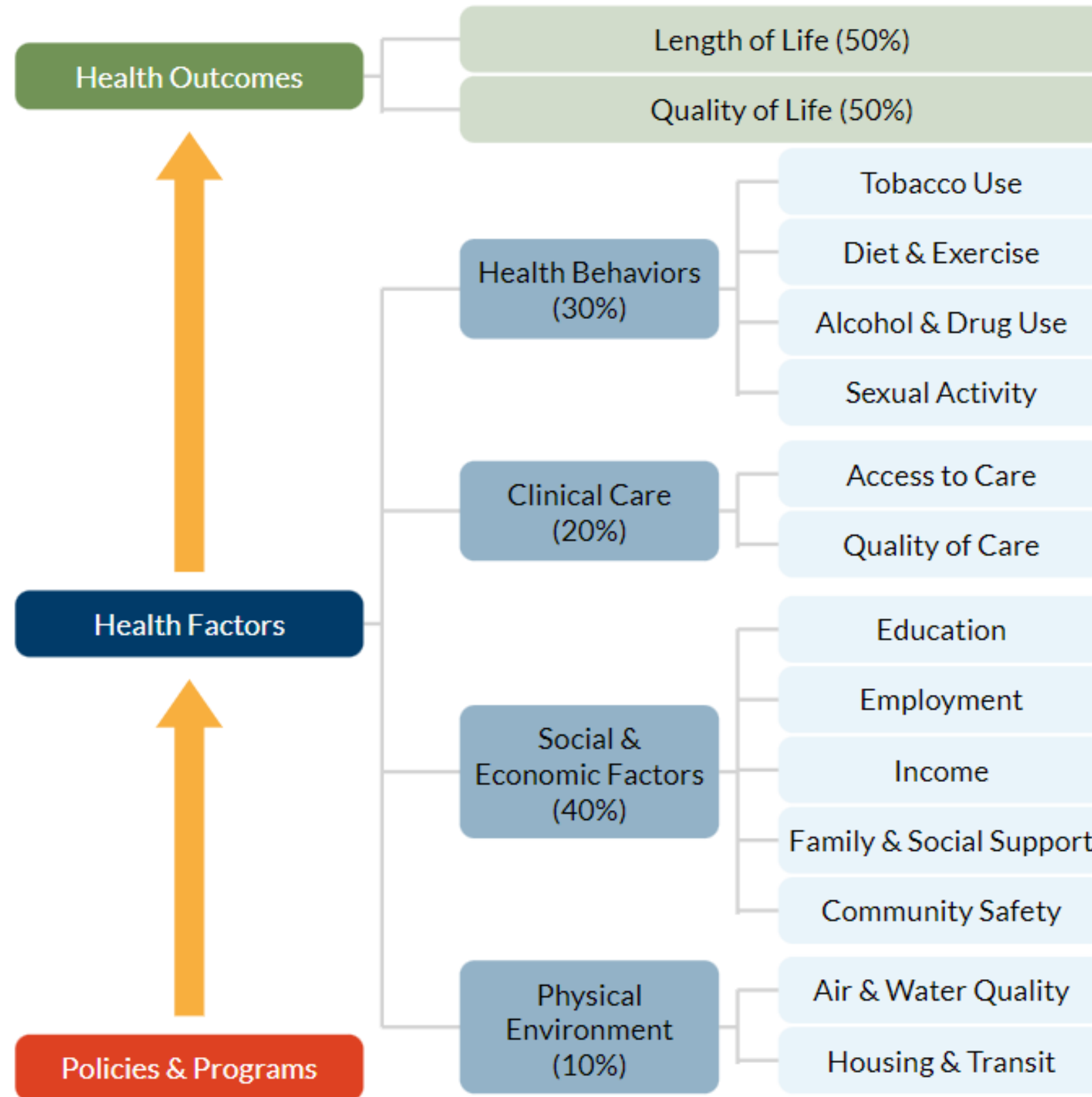
United Way of Delaware



Green River

Social Determinants of Health

County Health Rankings Model



50% can be traced back to ZIP Code



Our health and wellbeing is affected by where we live, work, learn, play, worship, and age.



ECDC HISTORY

Identifying A Problem



Need Delaware specific data at the population level



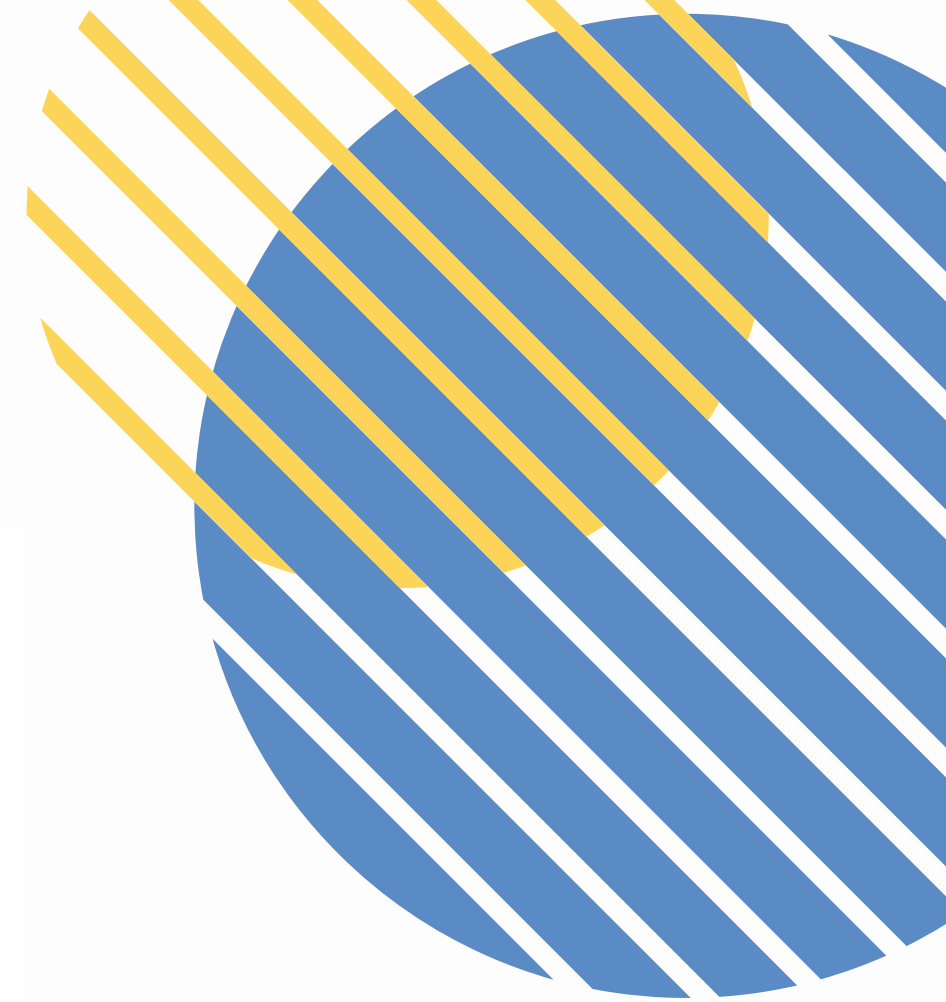
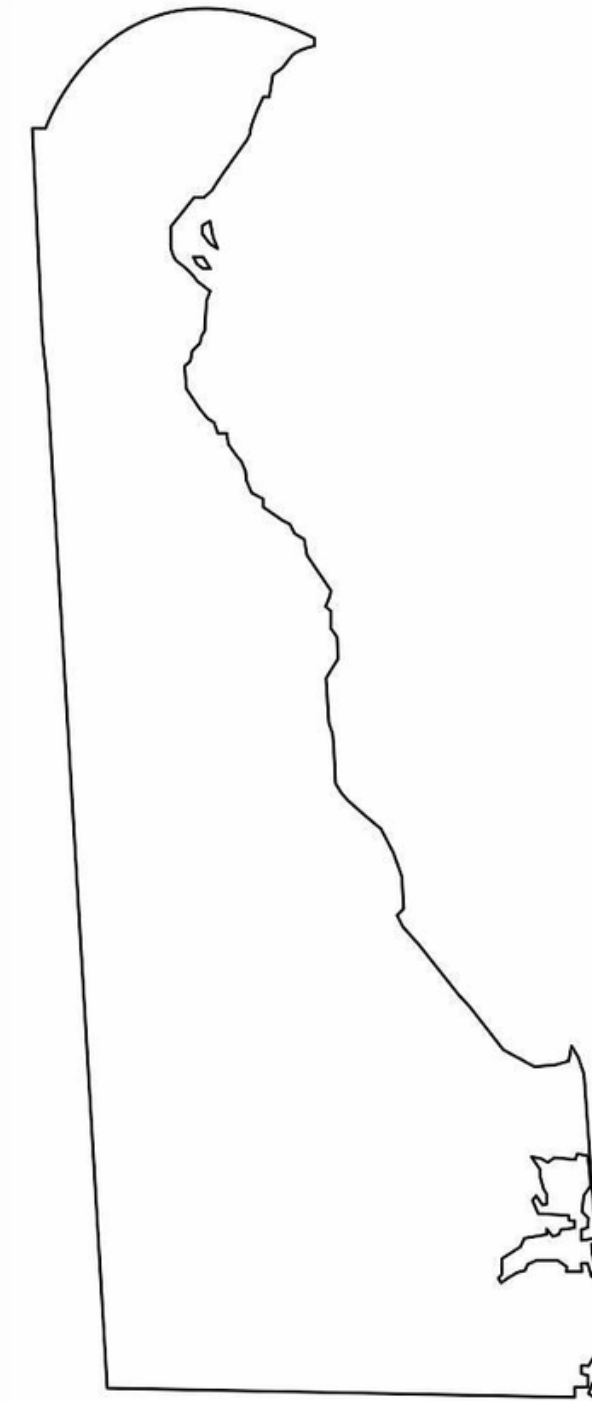
No central place to find detailed data relating to social determinants



Gaps in the data being collected



Patchwork of sources that do not complete equity data story






ECDC HISTORY

Addressing a need

In order to address the gaps in racial equity and social justice we needed...

- Local and Detailed Data
 - An Easy to Use Platform
 - Data That Tells a Story
 - Usability by Community Stakeholders
 - A Partnership for Long-Term Sustainability
- 

THE EQUITY COUNTS DATA CENTER (ECDC)



Digital data hub/platform

- Collect, curate and analyze Delaware-specific data
- Explore data related to racial equity and social justice:
 - Health
 - Education
 - Criminal Justice
 - Wealth Creation
 - Other areas associated with the social determinants of health (SDOH).

VISIT ECDC



www.MyHealthyCommunity.dhss.delaware.gov.com

HEALTH

- Preventative Healthcare
- Chronic Disease and Health Outcomes
- Adverse Childhood Experiences
- COVID-19 Statistics

EDUCATION

- Student Suspensions and Expulsions
- Student Performance Assessment
- Student Enrollment and Graduation Rates

CRIMINAL JUSTICE

- Student Risk Factors

WEALTH CREATION

- Employment
- Income and Poverty
- Housing
- Benefits
- Area Deprivation Index

PILLARS OF EQUITY



Data Sources

- Behavioral Risk Factor Surveillance System (BRFSS)
- CDC PLACES Small Area Estimates for Health Indicators
- Delaware Department of Education. Delaware Education Data.
- University of Delaware, Center for Drug and Health Studies. Delaware School Survey.
- University of Wisconsin School of Medicine and Public Health. 2019 Area Deprivation Index.
- U.S. Census Bureau; American Community Survey.
- U.S. Census Bureau; Decennial Census.



POPULATION DATA



- Tells a story around equity in the population
- Informs decision-making, allocation of resources, grant-writing, and advocacy
- Helps monitor changes at the population level



Dive into ECDC Data

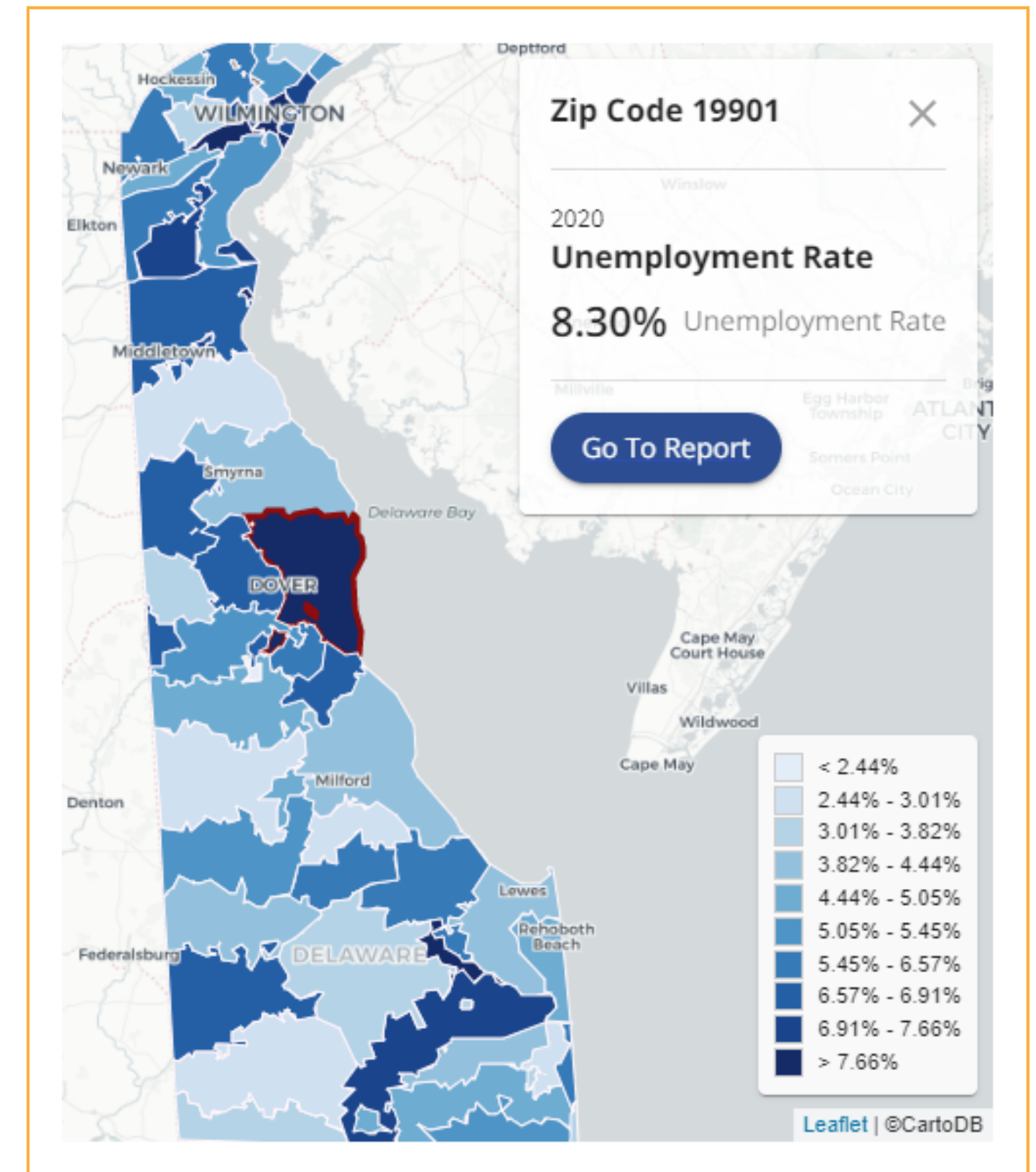
Zip-Code 19901: Dover

- Population: 37,182
- Population Density: 466 people/sq mile
 - 56% White
 - 34% Black
 - 4% Two or more races
 - 3% Asian
 - 2% Other race
- 92% Non-Hispanic
- 8% Hispanic

Data Interest:

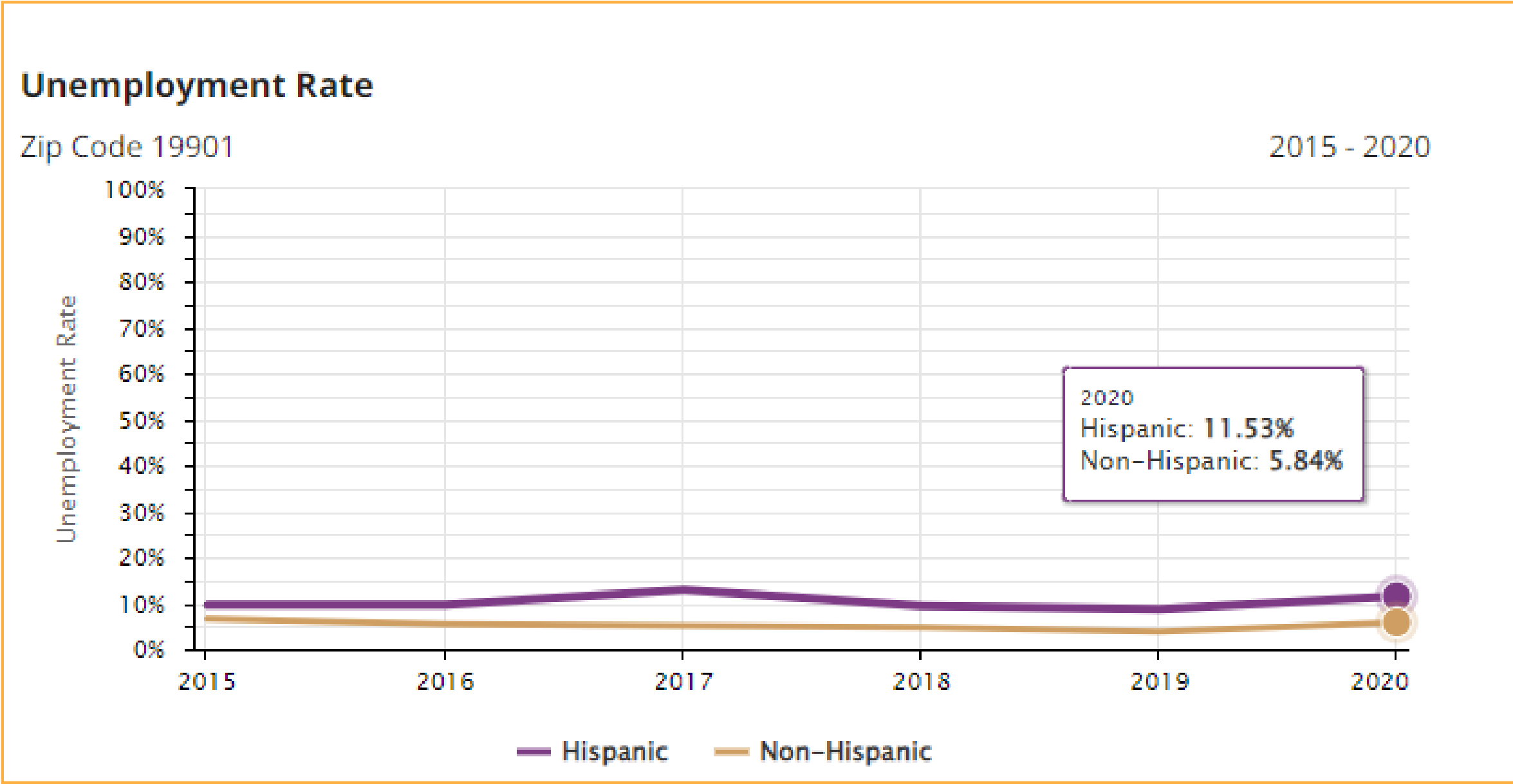
Wealth Creation - Unemployment and Poverty

Unemployment Rate in Delaware: **5.79%**



Zip Code 19901:

Unemployment Rate by Ethnicity



In 19901, the unemployment rate among Hispanics is twice as high as Non-Hispanics.

US Census American Community Survey

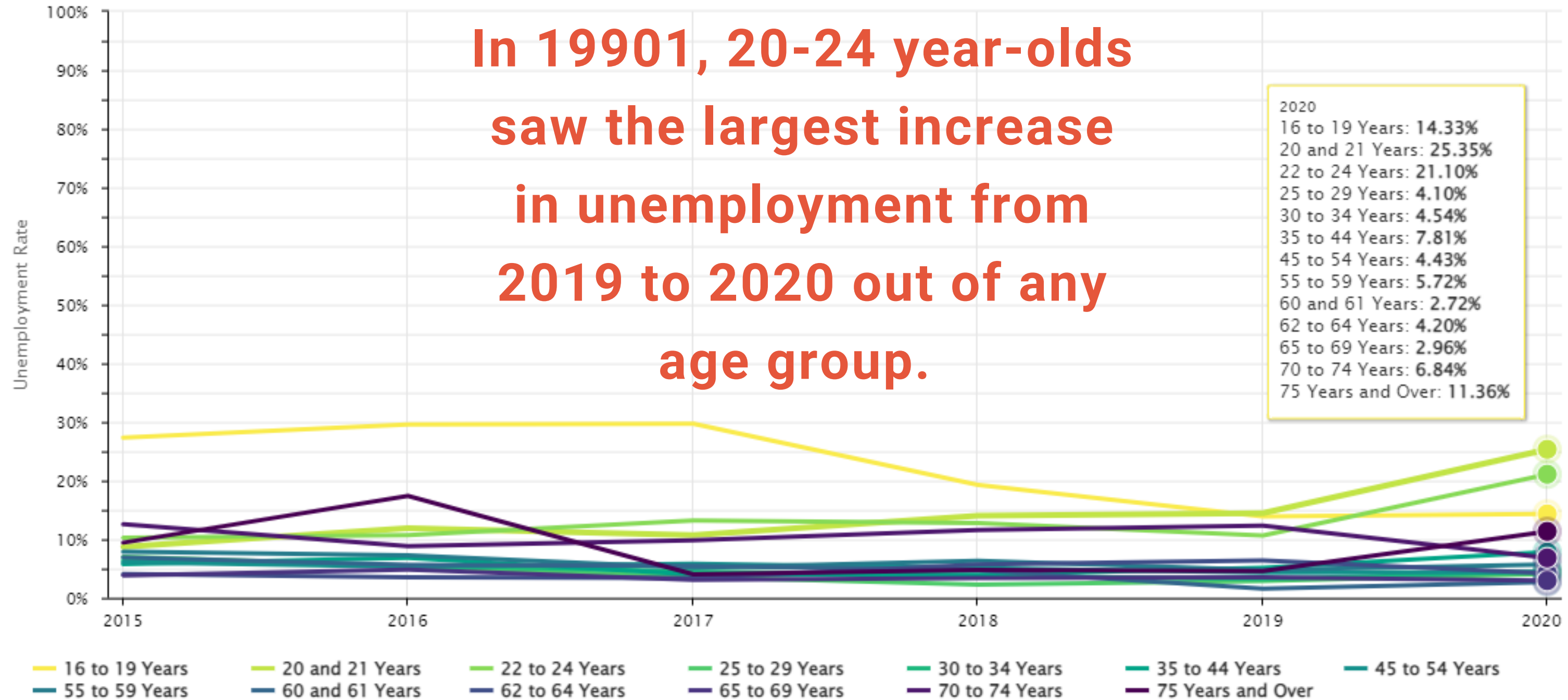
Zip Code 19901:

Unemployment Rate by Age

Unemployment Rate

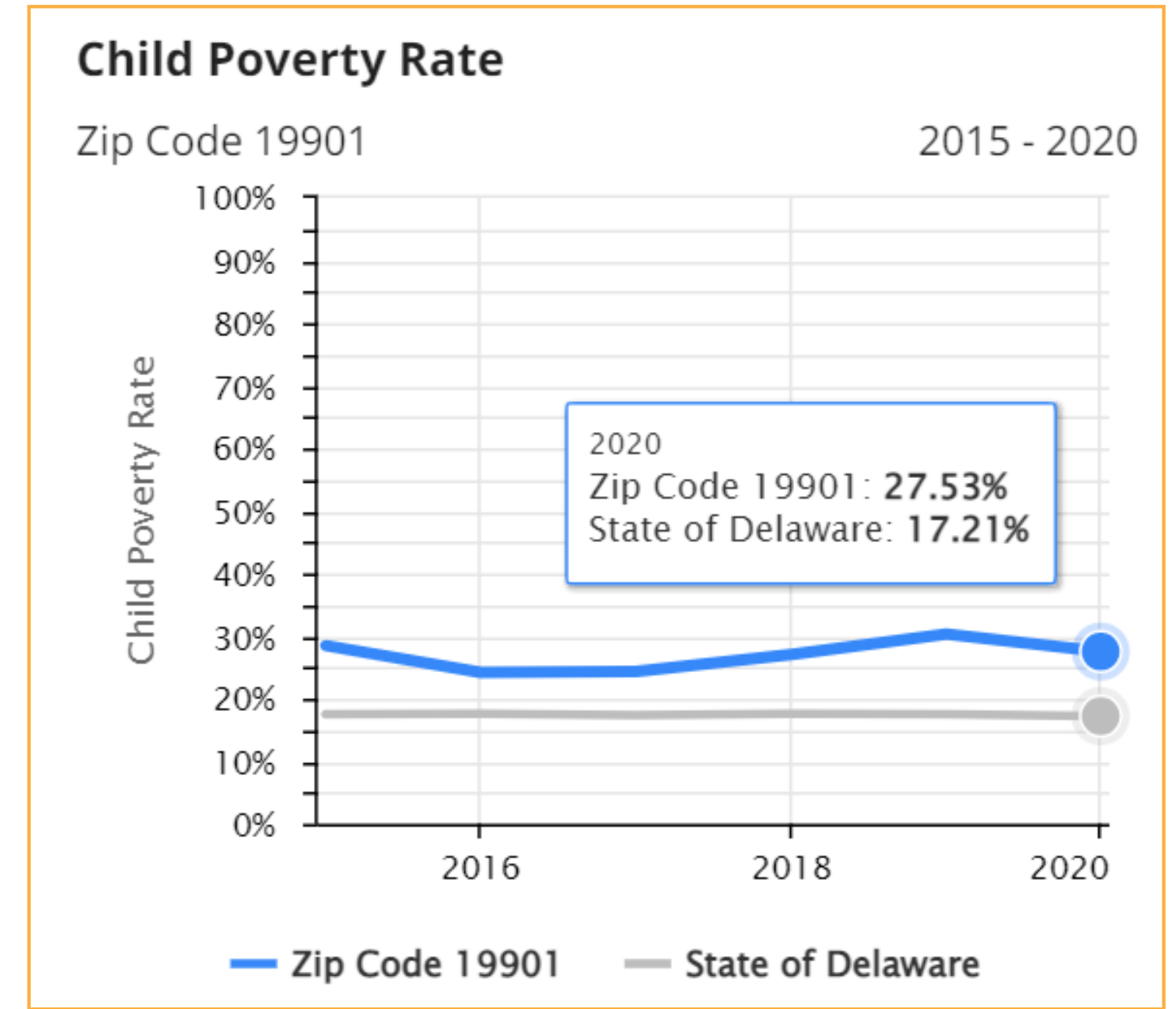
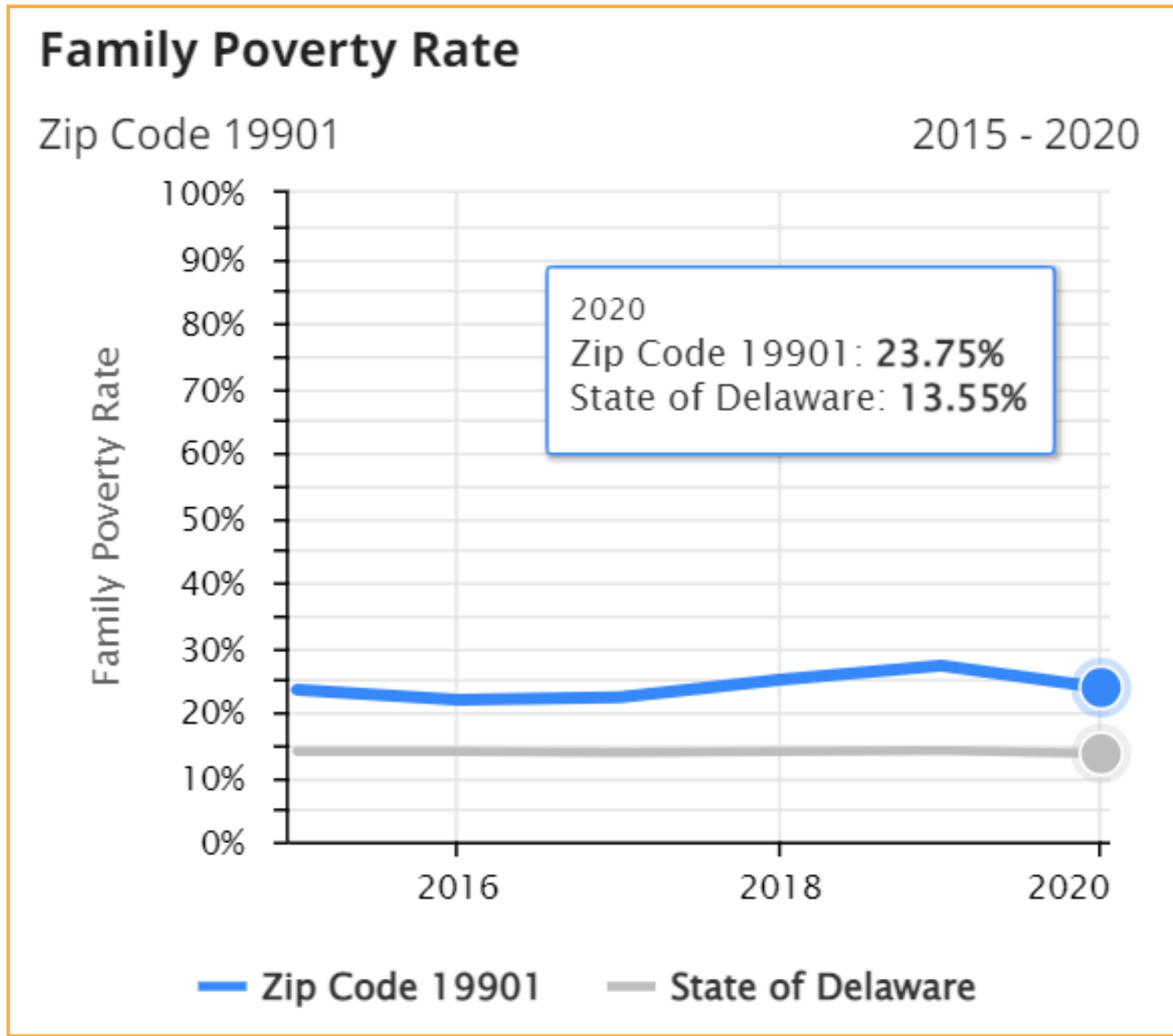
Zip Code 19901

2015 - 2020



Zip Code 19901:

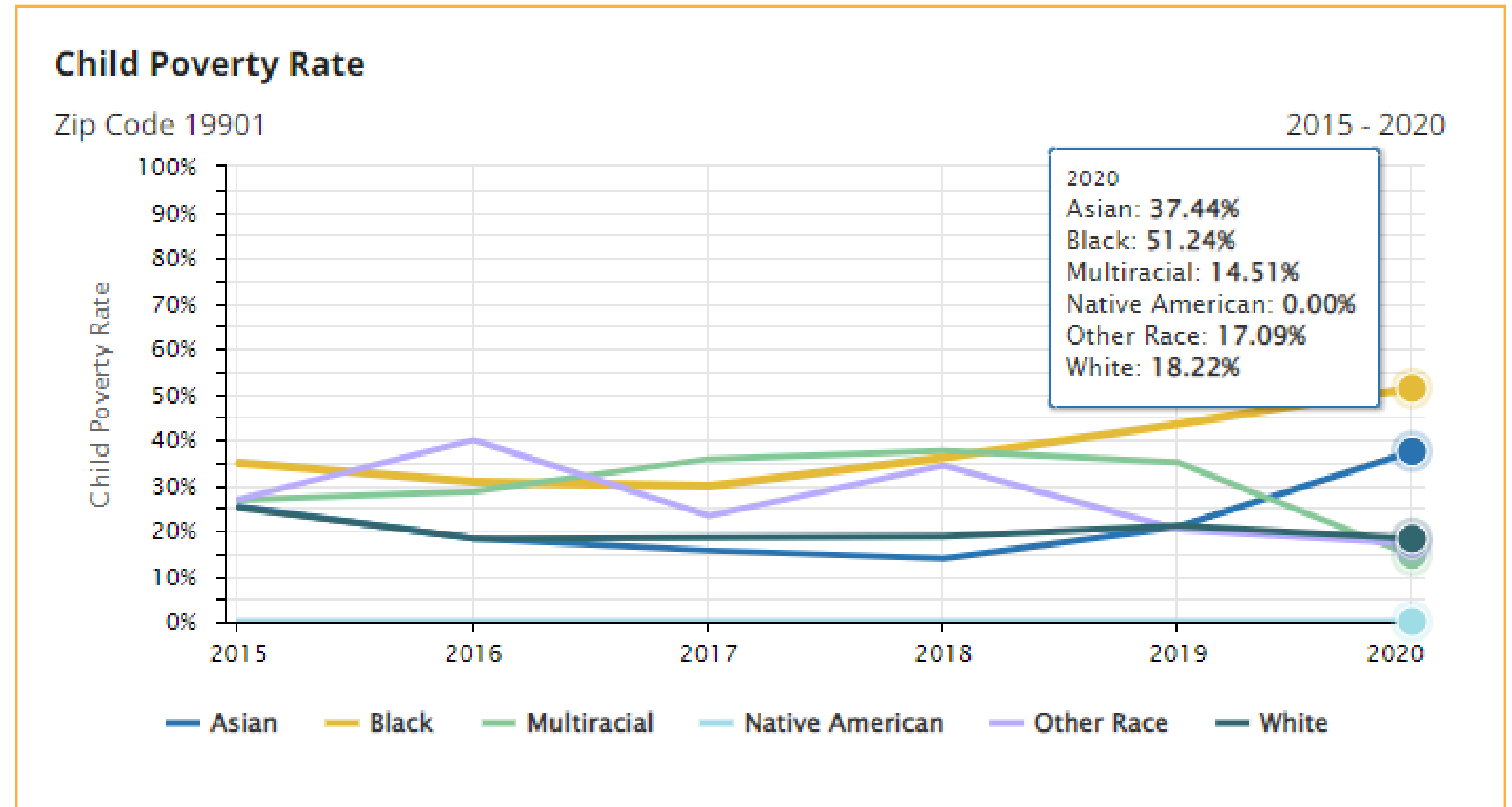
Family and Child Poverty Rate



Zip Code 19901:

Child Poverty Rate by Race

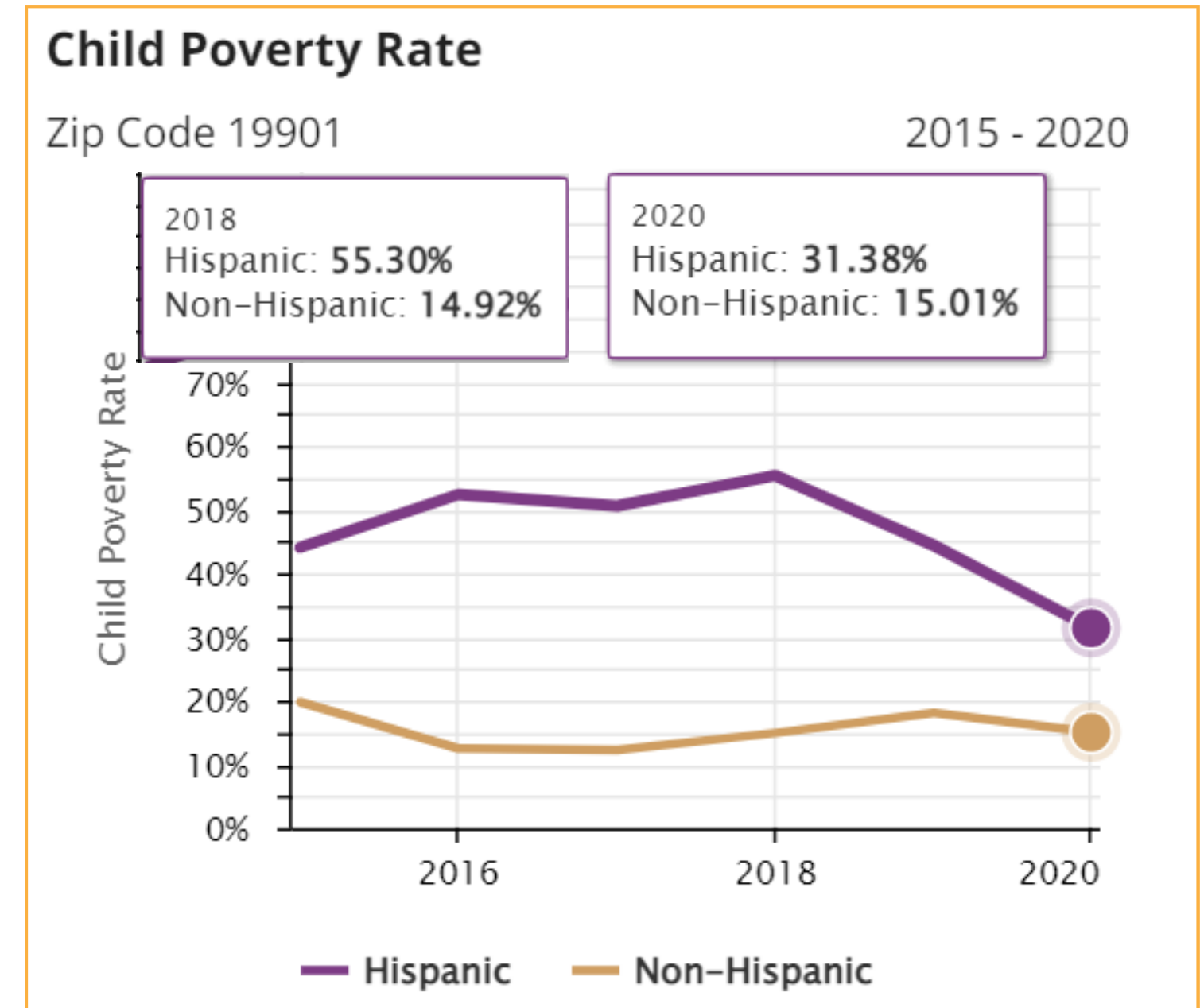
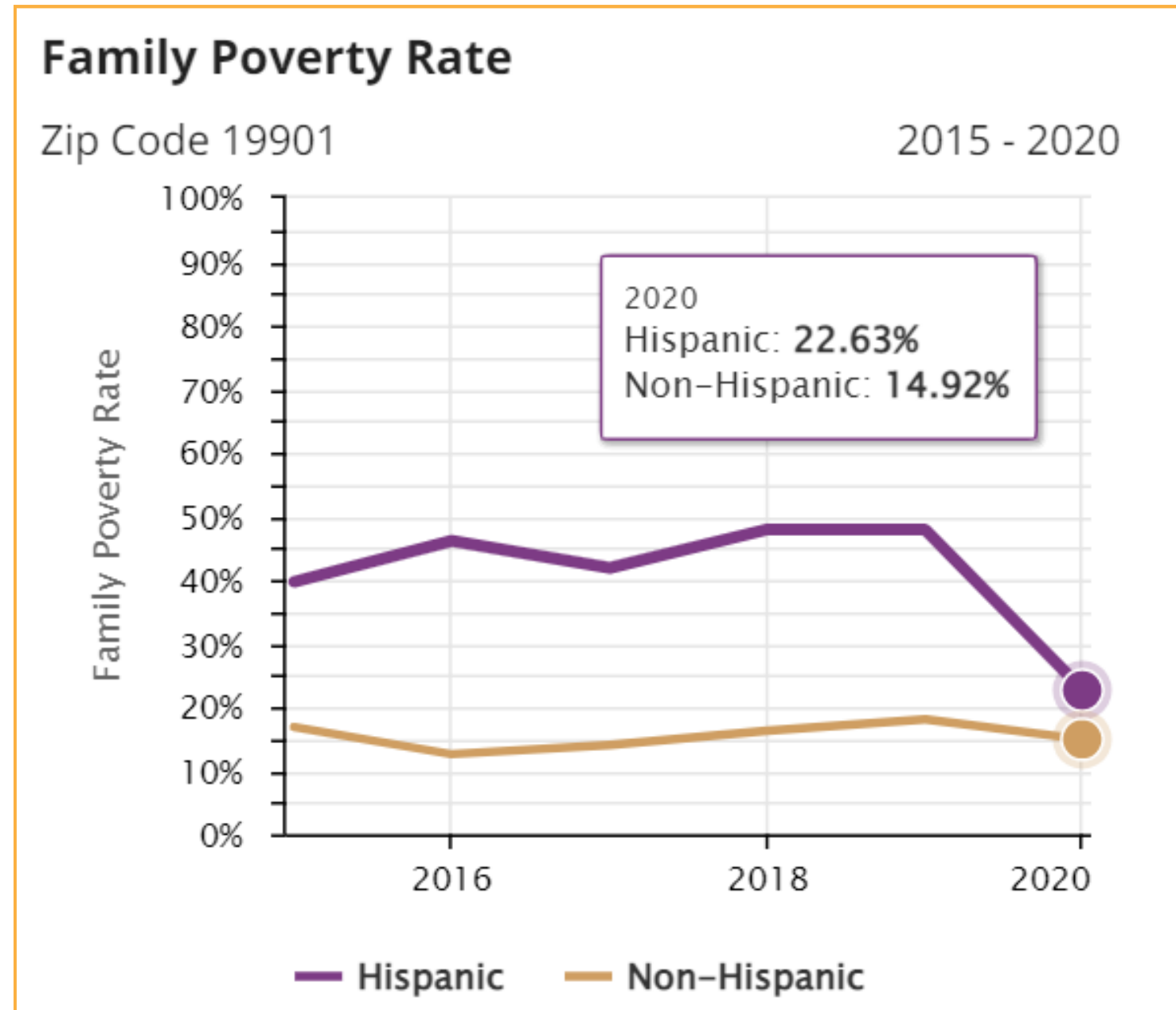
Half of all Black children in 19901 are living in poverty.



US Census American Community Survey

Zip Code 19901:

Family and Child Poverty Rate by Ethnicity



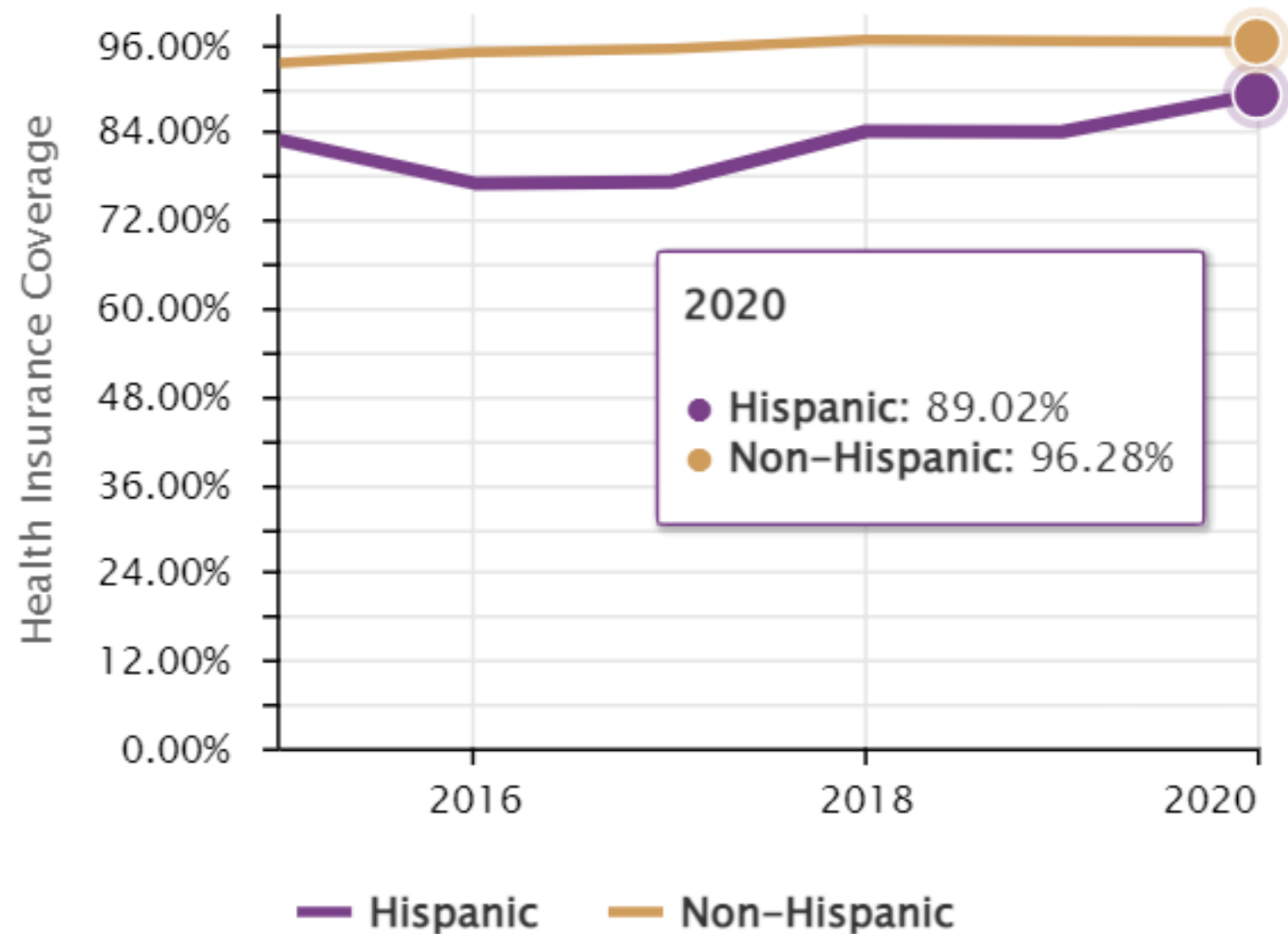
In 2020, Hispanics saw improvements in Family and Child Poverty not seen in Non-Hispanics.

Zip Code 19901:

Health Insurance Rate by Race and Ethnicity

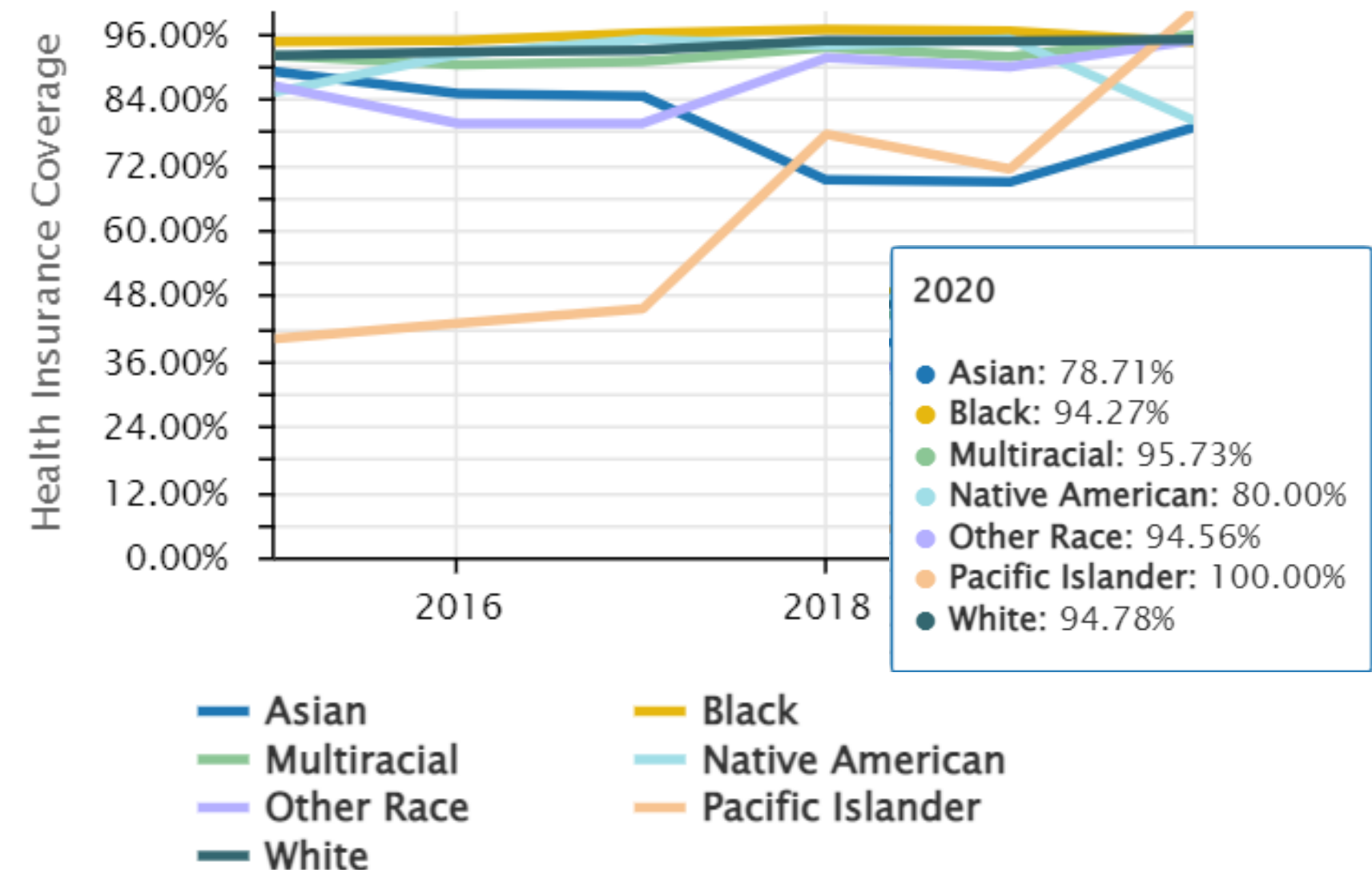
Health Insurance Coverage

Zip Code 19901



Health Insurance Coverage

Zip Code 19901



EQUITY COUNTS PARTNERSHIP INITIATIVE

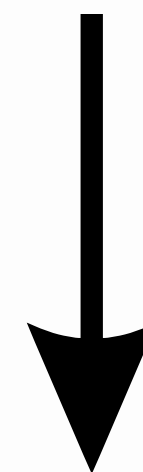
DATA PROCESS

OCTOBER 2022 - JULY 2023

Plan and Design



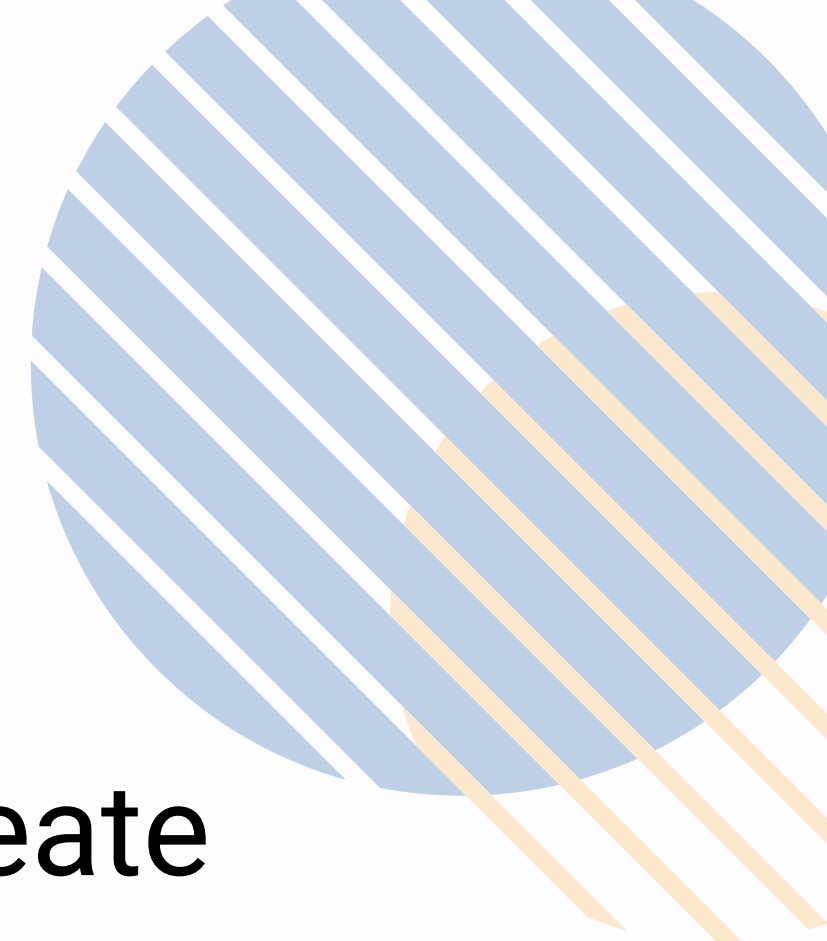
Collect and Create



Publish and Report
Findings



Process and Analyze





EQUITY COUNTS PARTNERSHIP INITIATIVE

**Six
Organizations**
Diverse in size, focus,
and location.

**Mix of
Missions**
Place-based, wealth creation
Youth risk factors
Education
Health

**Operating
across
Delaware**
4 in New Castle
2 in Kent and Sussex

Challenges
Time
Organizational capacity
Limitations of the data
Continued monitoring

GOALS BY JULY 2023

- ✓ Enhance team's data capacity through use of the ECDC.
- ✓ Be part of ECDC development to make data available to all Delawareans.
- ✓ Bolster data use to inform resource allocation, policy proposals, program implementation, and community action initiatives.
- ✓ Promote change through data that tells a compelling story of the organization's need and impact in Delaware.





THANKS FOR ATTENDING!

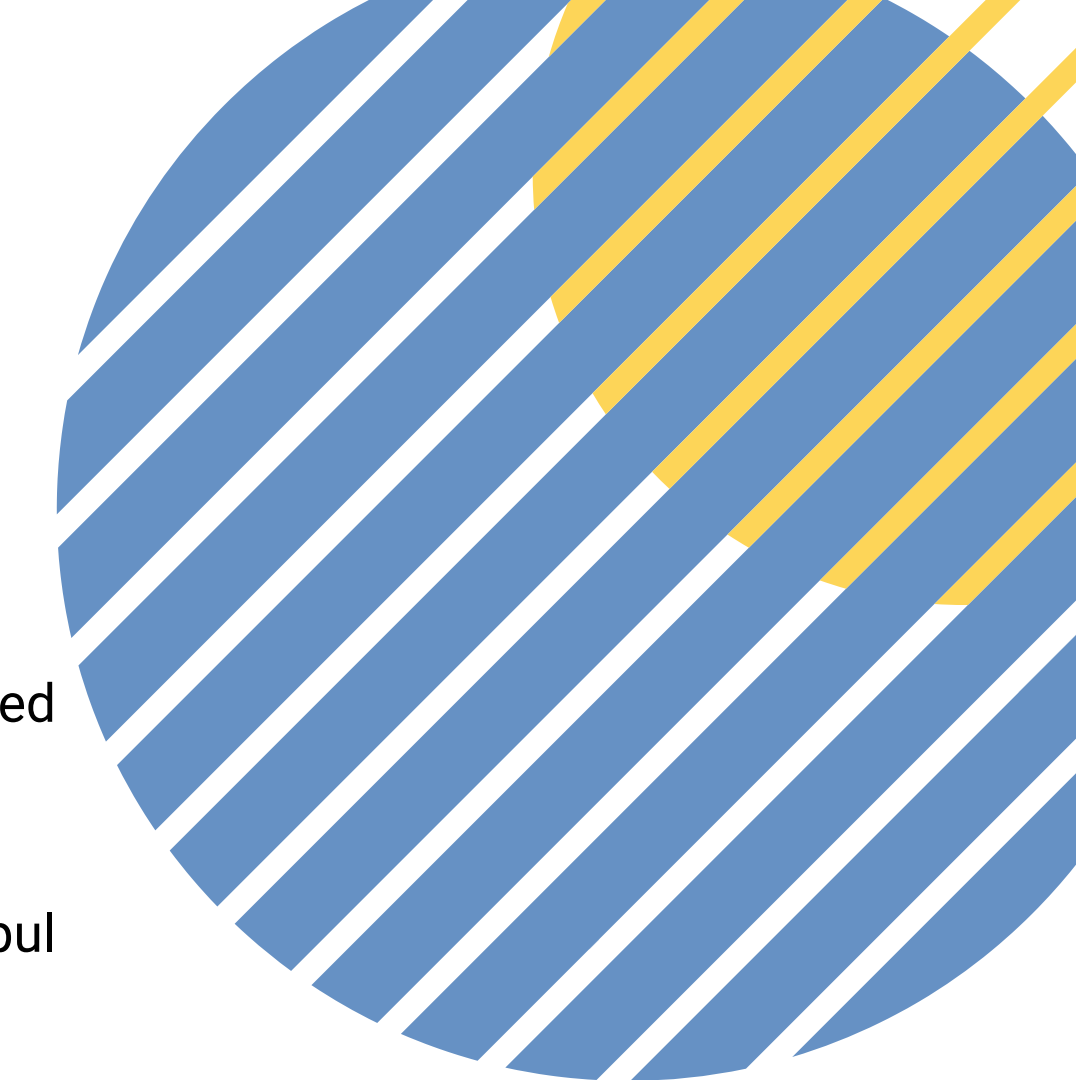
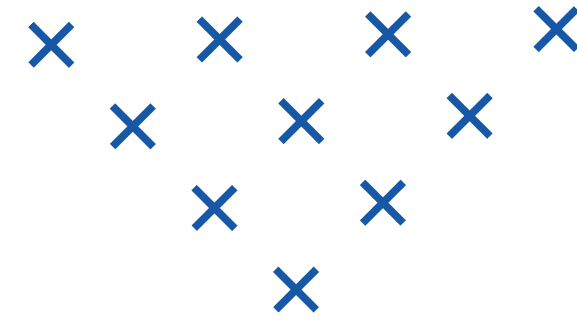
QUESTIONS?



This initiative was supported by funds made available from the Centers for Disease Control and Prevention, Center for State, Tribal, Local and Territorial Support, under National Initiative to Address COVID-19 Health Disparities Among Populations at High-Risk and Underserved, Including Racial and Ethnic Minority Populations and Rural Communities.

[uwde.org](https://www.uwde.org)

<https://myhealthycommunity.dhss.delaware.gov/>



Resources

Delaware Department of Public Health. (n.d.). Equity Counts Data Center. My Healthy Community. Retrieved February 23, 2023, from <https://myhealthycommunity.dhss.delaware.gov/portals/ecdc/locations/state>

Remington, P.L., Catlin, B.B. & Gennuso, K.P. The County Health Rankings: rationale and methods. *Popul Health Metrics* 13, 11 (2015). <https://doi.org/10.1186/s12963-015-0044-2>

U.S. Department of Health and Human Services. (n.d.). Social Determinants of Health. Social Determinants of Health - Healthy People 2030. Retrieved February 23, 2023, from <https://health.gov/healthypeople/priority-areas/social-determinants-health>